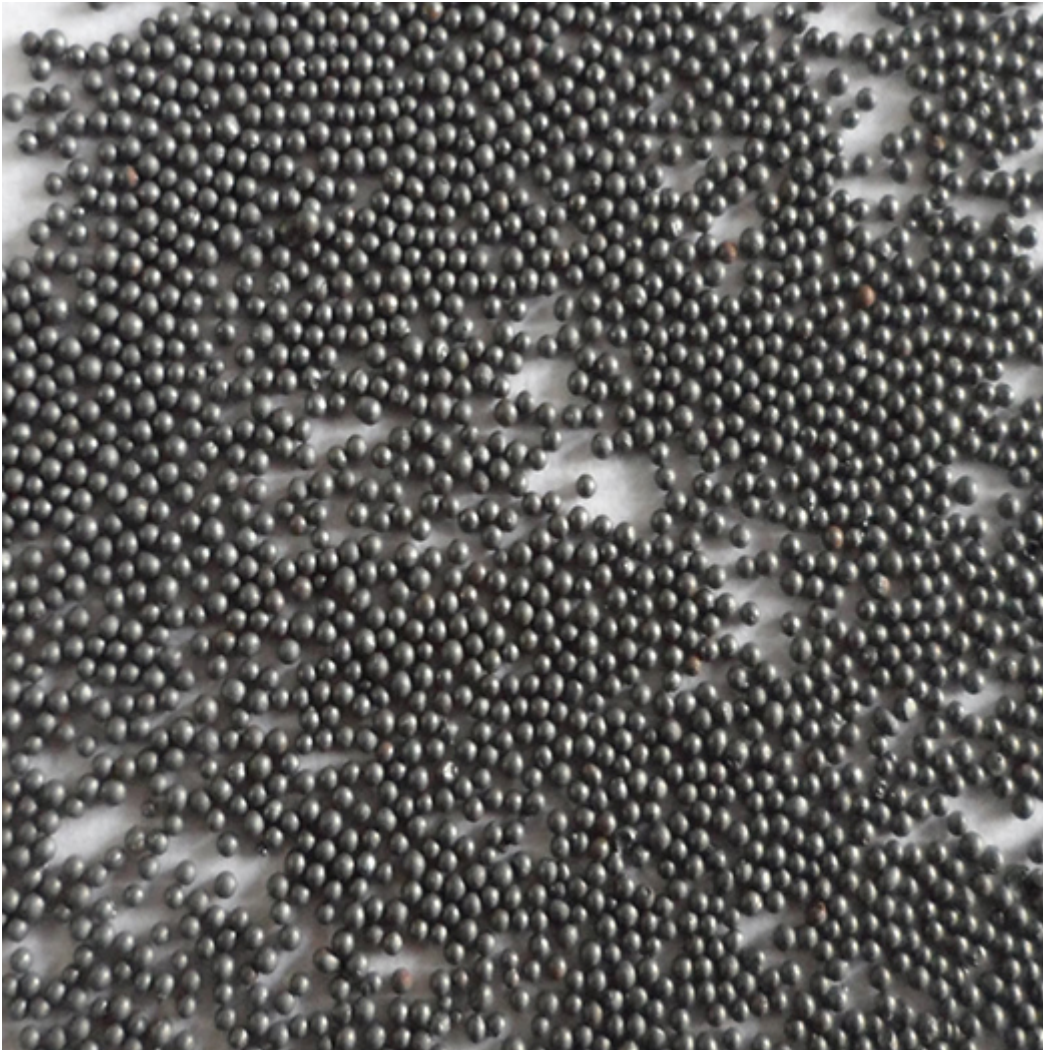


# How Hard Is Stainless Steel Cut Wire Shot

## Detail Introduction :

There are several types of shot available in the market. Among them are Stainless steel cut wire shot and steel shot. But before we discuss about these types, let's first get to know how hard these materials are. This article will also provide some information about their cost. Finally, we'll also go over the hardness and application of stainless steel cut wire shot. Hopefully, this article will be useful to you.



## Cast steel shot

Abrasives are used in the shot blasting process. Cast steel shot for S170 is specially designed for the process. Its diameter is 0.5mm and its hardness is moderate. S170 steel shot has good cleaning effects and uniform hardness. Its uniform hardness and tight organization ensure the consistency and uniformity of the shot. It is also highly durable and wear-resistant, and is widely used for descaled forgings and other structures.

Steel shot is a high carbon cast steel round media. It is hardened and tempered, and is used in centrifugal wheel blast machines. It is an excellent choice for applications requiring hardening and peening. Listed below are some of the applications of steel shot.

are some common uses of steel shot. These include: - Deburring and peening: For metal fabrications, steel shot also prevents mold release agents from forming. It is available as custom pre-blended Work  
Stainless steel cut wire shot

Stainless steel cut wire shot is produced by cutting stainless steel wire into pellets, which are then further conditioned to different grades. These pellets are widely used in shot/air blasting of different types of stainless steel and non-ferrous metal castings. These are commonly used for the smooth and rust-free surface treatment of various objects, as these are highly durable and have uniform particles. Stainless steel cut wire shot is also commonly used in deburring and cleaning applications.

Stainless steel cut wire shot is a specialty that finds application in a variety of applications. Non-ferrous materials can be contaminated by ferrous material, and stainless steel cut wire shot helps prevent this contamination. Stainless steel cut wire shot is available in conditioned, unconditioned, and special grades and forms. It is used in blasting processes to clean and smoothen surfaces. This shot is also useful for cleaning ferrous-contaminated surfaces, as it is non-ferrous and does not contain ferrous contamination.

Stainless steel cut wire shot has a higher cycle life than cast steel shot. It has fewer breakdowns, which results in fewer replenishment orders. In addition, it produces better results. Its longer life and sturdiness make it a superior choice for many industries. The durability of stainless steel cut wire shot is an important factor to consider when deciding on your shot peening process. So, what are the advantages and disadvantages of stainless steel cut wire shot?

The superior performance of cut wire shot is largely attributed to its thermal treatment process. Its microstructure is refined to enhance life and resistance to failure. It also produces the lowest cost of production and consumption. And, as a bonus, cut wire shot is also a more durable material than cast steel shot. So, it might be the best option for your operation. It can improve your productivity and reduce your expenses. So, don't hesitate to check out ERVIN CW steel cut wire shot today.

Hardness of S170 steel shot

S170 steel shot is significantly harder than lead, measuring 170 Brinell hardness. This means that the shot is able to resist deformation when fired at high speeds. In addition to being harder, S170 steel shot also has a lower carbon content than lead. This makes them a better choice for shooting targets at high temperatures. To determine how hard an S170 steel shot is, read this article.

S170 steel shot is a hard, uniform product with a diameter of 0.5mm. Because of its uniform hardness, steel shot can provide good coverage in a short period of time. The product also has a high cleaning efficiency, good durability, and tight organization. S170 steel shot has an excellent range of properties for industrial applications, including blasting. Here are some benefits of S170 steel shot:

S170 steel shot has more durability than HSS, which makes it ideal for high-speed applications. Because it is harder than HSS, S170 steel shot is reusable. S170 steel shot also provides greater dimensional accuracy, which is especially useful when peening parts with complex shapes and surfaces. A surface that is too

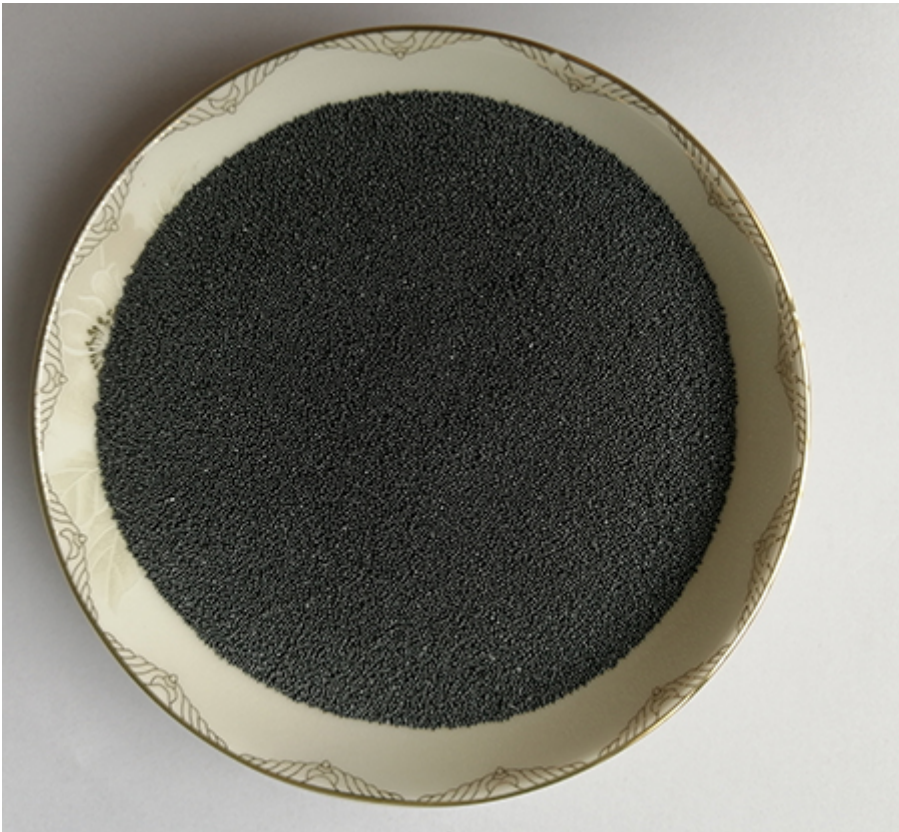
can lead to vibration and other problems. Steel shot is also excellent for cleaning components. The hardness of S170 steel shot can be increased by blasting the part. Shot peening also increases the resistance of the metal to cracks, fatigue, and corrosion. This type of shot peening is commonly used on high-wear components, like engine components and metallic skins for advanced aerodynamic products. Because of its high density and hardness, it can be recycled hundreds of times. Furthermore, the process produces minimal dust.

#### Cost of stainless steel cut wire shot

Stainless steel cut wire shot is used in the shot pinning process, blasting process, and surface finish process. Its advantages are that it does not fracture and does not generate any dust. This type of shot does not have any iron oxide coating, thus minimizing the chances of contamination. In addition, stainless steel cut wire shot is a safe and ecological material. Therefore, the demand for cut wire shot will continue to grow.

Stainless steel cut wire shot is relatively inexpensive. As opposed to cast steel shot, it has a much longer life cycle. Most stainless steel cut wire shot products can withstand over 3,000 cycles. Stainless steel cut wire shot can survive as many as 11,000 cycles. It is safe and stable for use in any smelting operation. If you're looking for a stainless steel cut wire shot, Holec Blast offers both products.

Stainless steel cut wire is available in conditioned and as-cut forms. Stainless steel cut wire is a durable media for peening applications, and it does not fracture or delaminate as it wears. Zinc cut wire is a good choice for cleaning and stripping paint from hooks and fixtures. This abrasive media can also be used for grinding steel. The cost of stainless steel cut wire shot depends on the type and size of your application.



Carbon steel cut wire shot is a commonly used blasting media. Its fine grain size and higher hardness make it a better choice for components that need a high level of blasting media hardness. It can also be recycled.

multiple times. This makes it a valuable material for many peening applications. Once used, cut wire is recyclable and can reduce the cost of steel blasting operations. If you want to increase the life of your stainless steel parts, this is the best choice for you.